



Faculty of Medicine, Dentistry and Health Sciences University of Melbourne, Australia

Australia's leading health and medical faculty

mdhs.unimelb.edu.au

EXCELLENCE

- Consistently ranked among top 40 universities globally
- The top university in Asia-Pacific for clinical, preclinical and health
- Ranked #1 in Asia for Genetics, Immunity and Infection, Neuroscience, and Psychiatry
- The top ranked university in Australia
- Ranked #7 in world for graduate employability

EDUCATION

- Total students: 8,800+
- Undergraduate: 1,700+
- Postgraduate (coursework): 4,800+
- Higher degree research students: 2,300+
- International students: 1,600+ from over 100 countries
- 160+ courses covering the breadth of health and biomedicine

RESEARCH

- Annual research income of more than AUD \$280 million
- 4,000+ peer-reviewed publications each year
- Over 50% of publications in top 10% of journals
- Over 20% of publications in top 10% of world's most cited

FACULTY

- Academic staff: 1,700+ including 1,300+ research academics
- Honorary academics: 3,500+ including 2,000+ hospital-based honorary staff
- Professional staff: 800+

SCHOOLS

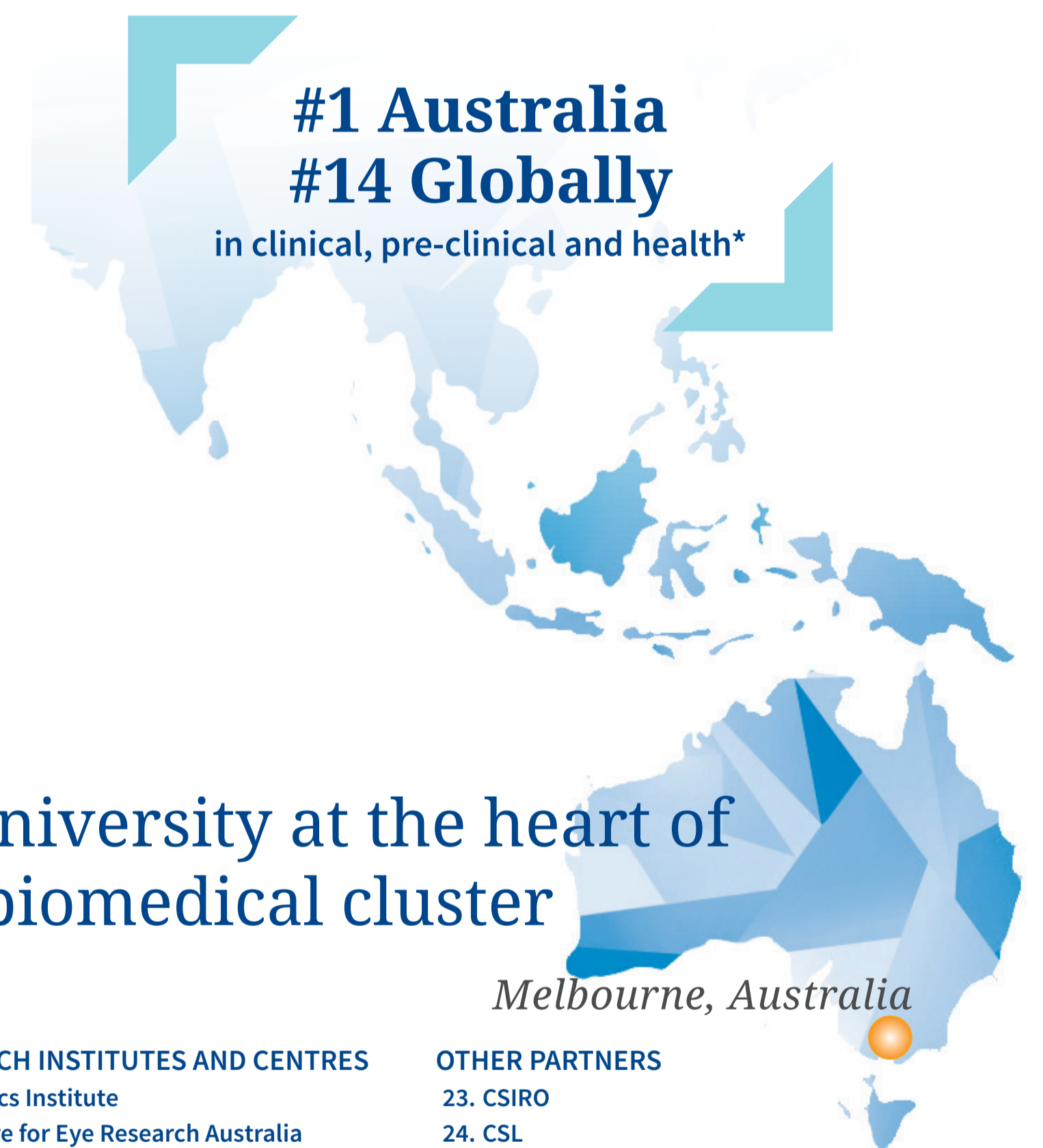
- Melbourne Medical School
- School of Biomedical Sciences
- Melbourne School of Population and Global Health
- Melbourne Dental School
- Melbourne School of Psychological Sciences
- Melbourne School of Health Sciences

CENTRES

- Melbourne Poche Centre for Indigenous Health
- Melbourne Research Alliance to End Violence Against Women
- University of Melbourne Centre for Cancer Research
- Centre for Health, Exercise and Sports Medicine
- Centre for Youth Mental Health
- Centre for Stem Cell Systems
- Centre for Health Policy

KEY FACTS

- 49,000+ employees
- 10,000 researchers
- 24.28 % share of NHMRC funding
- 24 % of Australia's output in academic journals
- AUD \$3.6 billion contribution to the Australian economy
- CSL Ltd. Australia's largest biotherapeutics company, worth \$45 billion headquartered in Parkville and a global presence in more than 30 countries
- Full range of tertiary care Australia's only cluster with leading hospitals covering all tertiary care for children, women and adults



OUR RESEARCH STRENGTHS

RESEARCH PILLARS



Cancer



Child Health

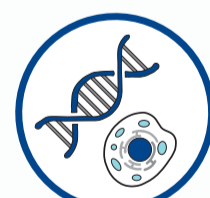


Infection and Immunity



Neurosciences and mental health

MAJOR PRIORITIES



Disease burdens such as cardiovascular, ageing and metabolic disease



Community priorities such as Indigenous Health, Family Violence

OUR CONTRIBUTIONS



Nobel Laureates in Physiology or Medicine and Peace have taught, studied and researched at the University of Melbourne including:

- Lord Howard Florey (1945)
- Sir Frank Macfarlane Burnet (1960)
- Sir John Eccles (1963)
- Professor Bert Sakmann (1991)
- Professor Peter Doherty (1996)
- Professor Elizabeth Blackburn (2009)
- Associate Professor Tilman Ruff (2017)

- Identification of the first gene implicated in the development of epilepsy (Professor Sam Berkovic AC, Professor Ingrid Scheffer AO)
- Discovery of lithium therapy as an effective treatment for bipolar disorder (Dr John Cade)
- Development of the bionic ear (Professor Graeme Clark AC)
- Development of Recaldent to help prevent and reverse dental decay (Professor Eric Reynolds AO)
- Discovery of the human Rota virus and development of a vaccine for infants and young children (Professor Ruth Bishop AO, Professor Julie Bines)
- Road trauma injury research leading to life-saving safety control measures (Dr Donald Hossack)
- Eye health research and policy recommendations resulting in halving the gap in the rates of blindness in indigenous communities (Professor Hugh Taylor AC)

Australia's leading university at the heart of Australia's premier biomedical cluster

Melbourne, Australia

HOSPITALS

- Austin Health
- Dental Health Services Victoria
- Epworth Healthcare
- Goulburn Valley Health
- Melbourne Health
- Mercy Health
- Northern Health
- St Vincent's Hospital
- The Royal Children's Hospital
- The Royal Victorian Eye and Ear Hospital
- The Royal Women's Hospital
- Western Health

RESEARCH INSTITUTES AND CENTRES

- Bionics Institute
- Centre for Eye Research Australia
- Doherty Institute
- Florey Institute
- Monash Institute for Pharmaceutical Science
- Murdoch Childrens Research Institute
- National Ageing Research Institute
- Peter MacCallum Cancer Centre
- St Vincent's Institute
- Walter and Eliza Hall Institute

OTHER PARTNERS

- CSIRO
- CSL
- Orygen, Youth Mental Health
- Victorian Comprehensive Cancer Centre
- Rural partnerships, Shepparton, Ballarat, Bendigo and Wangaratta and Dental at Gippsland (Not indicated on this diagram)



* Times Higher Education World University Rankings 2020